


# FISHWAY STATUS REPORT

**Date:** 10/31/2015  
**Inspection Period:** 10/25/2015 thru 10/31/2015

All JD Fishways are inspected twice per day during fish season, Mar. 1 - Nov. 30  
 Frequent monitoring of the PLC displays in SMF Fisheries Office as necessary.



**US Army Corps  
of Engineers**  
Portland District

**JOHN DAY DAM**

JD/WC Project-Fisheries  
 P.O. Box 823  
 Rufus, Oregon 97050  
 Phone: 541-506-7860

John Day Dam	Inspections	Criteria	Total Number of Inspections:	14	Temperature:	61 F
	Out of Criteria	Limit			Secchi:	6.0 Ft.
<b>NORTH FISHWAY</b>			4 out of 6 AWS pumps available since 12/23/14			
Exit differential	0	≤ 0.5'				
Exit Control weirs	0	High setting	High setting is normal for JDN			
Count station differential	0	≤ 0.3'				
Weir crest depth (DS gauge)	0	1.0' ± 0.1'				
Entrance differential	0	1.0' - 2.0'	AVG	1.5		
<b>SOUTH FISHWAY</b>			3 AWS Turbines in regular service since 2/28/15			
Exit differential	0	≤ 0.5'				
Exit Control weirs	0	High Setting	high setting since 10/18/15 due to high Forebay, above 265.0'			
Count station differential	0	≤ 0.3'				
Weir crest depth (US gauge)	0	1.0' ± 0.1'				
South entrance differential	0	1.0' - 2.0'	AVG	1.5		
Entrance weir SE1	0	depth (≥ 8')	AVG	8.5		
Collection channel velocity	0	1.5 - 4 fps	AVG	3.04		
N. Entrance PH(Bay 19)differential	0	1.0' - 2.0'	AVG	1.3		
Entrance weir NE1	0	depth (≥ 8')	AVG	8.3		
Entrance weir NE2	0	depth (≥ 8')	AVG	8.3		
<b>JUVENILE PASSAGE</b>			2015 SMF sampling season ended 9/15; the facility continues in bypass through 11/24			
Forebay/bypass conduit differential	0	4.0' - 5.0'	AVG	4.6		
Submersible traveling screens	0	visual inspect	Camera inspection of all STSs: 3 bad screens were replaced with working spares 10/22			
Turbine trashrack drawdown	0	<1.5', wkly	MU trashracks' raking as necessary per the differentials			
Vert barrier screen drawdown	0	<1.5', wkly				
Spill volume	0	Bay2 & 1.6K	Spill season ended on 9/1. Bay 2 open at 1.6 K for JDN attraction, daylight hours only			
Spill pattern	0	per FPP				
Turbine Unit Priority	0	per FPP				
Turbine 1% Efficiency	0	per FPP				

## SMOLT MONITORING FACILITY

### Operation:

Sampling season ended on 9/15; SMF will continue in bypass for the full flow PIT tags detections until 24 November.  
JD Fisheries crew works an abbreviated 18 hrs/7 swing shift schedule as required by FPP.

### Maintenance:

Porosity Unit/Separator's painting completed on 10/15; the reinstallation of dewatering screens underway.

### Research:

None

Fallbacks:           AVG:                           MAX: 0                           MIN: 0

## OTHER JOHN DAY ISSUES:

### Birds :

see the Avian Numbers tab. We report all species and locations, but in reality only gulls in the tailrace BRZ are relevant at JD.

**New ! Spillway Avian Line 68 snapped on approx. 10/31. 12 lines are missing out of 125 total at this time.**

The following avian lines have snapped this season and are out of commission: 44, 45, 46, 52, 53,55, 56, 57, 60 and 68.

Lines 25 and 26 have been missing since 2013; their re-install contract was awarded on 9/30/15 !

### Operations:

**MU 1 returned to service after its digital governor installation on 10/28; live sturgeon were noticed in its downstream gate wells the same day.**

**MU 1 scroll case was dewatered to salvage the sturgeon on Saturday, 10/31. 50 live sturgeon were salvaged and released back into tail race in good condition.**

**Regrettably, there were also 25 sturgeon mortalities found (see the JD MU1 Sturgeon' MFR for details.)**

JD North Fishway in regular service; 5 out of 6 AWS pumps are available. Repair work on pump 4 continues; pump 3 has vibration issues and should be the last last in service.

JD South Fishway in regular service with 3 AWS Turbines; it is meeting the optimal FPP criteria.

MU Gatewell Drawdowns: Differentials are checked Wednesdays and Sundays; all gatewells were in criteria.

### Maintenance:

**One STS failed in MU 12 on Friday, 10/30; it was replaced with working spare on Saturday, 10/31.**

JD North AWS pumps: four out of total six are available. Repair of AWS pump # 4 by a contractor started on 1/26 & is ongoing.

Calibration: All gauges/ sensors are within the criteria of 0.3' .

### Research:

2015 Adult Fish Counting by Normandeau Associates commenced on 1 April, 2015 and will continue daily through 1 November.

Proposal by PSMFC to install Adult PIT antennas at both JD Fishways is at the design/PDT level.

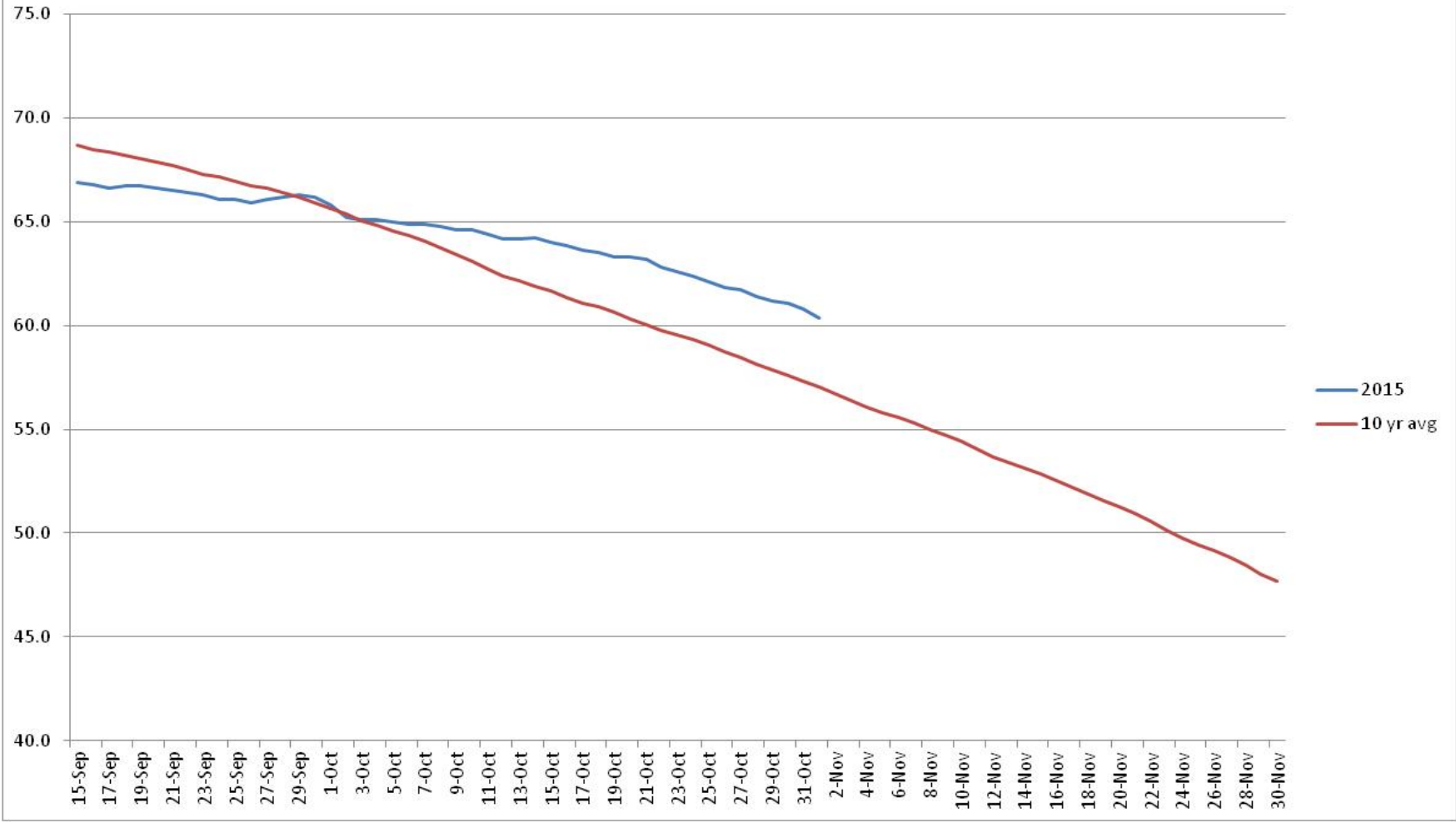
Kevin Moynahan  
OPM John Day/Willow Creek Project

Date:           October 31, 2015

E-Signed by MOYNAHAN, KEVIN, PATRICK, 1393959157  
VERIFY authenticity with approval

MOYNAHAN, KEVIN, PATRICK, 1393959157

### John Day TW Temperature



## JDA Collection Channel Velocity

Date 24-Oct-15

By: pete

Bay(s)	Time	Sec.	Velocity (f/s)
0-2	1:27	87	2.07
2 - 4	2:28	148	2.95
4 - 6	3:31	211	2.86
6 - 8	4:32	272	2.95
8 - 10	5:32	332	3.00
10 - 12	6:31	391	3.05
12 - 14	7:30	450	3.05
14 - 16	8:29	509	3.05
16 - 18	9:10	550	4.39
			<b>3.04</b>

**JDA Bird Counts: 10/25/15 to 10/31/15**

F(1): Forage AM survey    F(2): Forage PM Survey    NF(1): Non-Forage AM Survey    NF(2): Non-Forage PM Survey

Date	Zone	Gulls				Cormorant				Caspian tern				White Pelican				Grebe				Total
		F(1)	F(2)	NF(1)	NF(2)	F(1)	F(2)	NF(1)	NF(2)	F(1)	F(2)	NF(1)	NF(2)	F(1)	F(2)	NF(1)	NF(2)	F(1)	F(2)	NF(1)	NF(2)	
25-Oct	PHFB	0	0	0	170	0	2	0	0	0	0	0	0	0	0	0	0	0	1	106	0	279
25-Oct	SWFB	0	0	145	305	0	0	0	0	0	0	0	0	0	0	0	0	0	0	0	0	450
25-Oct	PH1	15	4	0	0	5	4	0	0	0	0	0	0	0	0	0	0	0	0	0	0	28
25-Oct	PH2	0	0	0	0	0	0	0	0	0	0	0	0	0	0	0	0	0	0	0	0	0
25-Oct	PH3	0	20	0	33	0	0	0	0	0	0	0	0	0	0	0	0	0	0	0	0	53
25-Oct	SW1	0	0	0	0	3	0	0	0	0	0	0	0	0	0	0	0	0	0	0	0	3
25-Oct	SW2	0	0	0	0	0	0	0	0	0	0	0	0	0	0	0	0	0	0	0	0	0
25-Oct	SW3	23	0	0	0	0	0	0	0	0	0	0	0	0	0	0	0	0	0	0	0	23
<b>Avg/Survey</b>		<b>31</b>	<b>327</b>	<b>7</b>	<b>0</b>	<b>0</b>	<b>0</b>	<b>0</b>	<b>0</b>	<b>0</b>	<b>0</b>	<b>0</b>	<b>0</b>	<b>0</b>	<b>0</b>	<b>0</b>	<b>1</b>	<b>53</b>			<b>836</b>	
26-Oct	PHFB	0	0	23	310	0	0	0	0	0	0	0	0	0	0	0	0	0	10	129	89	561
26-Oct	SWFB	0	0	285	175	0	0	0	0	0	0	0	0	0	0	0	0	0	0	0	0	460
26-Oct	PH1	0	10	0	0	0	7	0	0	0	0	0	0	0	0	0	0	0	0	0	0	17
26-Oct	PH2	0	0	0	0	0	0	0	0	0	0	0	0	0	0	0	0	0	0	0	0	0
26-Oct	PH3	0	23	0	32	0	0	0	0	0	0	0	0	0	0	0	0	0	0	0	0	55
26-Oct	SW1	0	0	0	0	0	0	0	0	0	0	0	0	0	0	0	0	0	0	0	0	0
26-Oct	SW2	0	0	0	0	0	0	0	0	0	0	0	0	0	0	0	0	0	0	0	0	0
26-Oct	SW3	0	0	0	0	0	0	0	0	0	0	0	0	0	0	0	0	0	0	0	0	0
<b>Avg/Survey</b>		<b>17</b>	<b>413</b>	<b>4</b>	<b>0</b>	<b>0</b>	<b>0</b>	<b>0</b>	<b>0</b>	<b>0</b>	<b>0</b>	<b>0</b>	<b>0</b>	<b>0</b>	<b>0</b>	<b>0</b>	<b>5</b>	<b>109</b>			<b>1093</b>	
27-Oct	PHFB	0	0	0	0	0	0	0	0	0	0	0	0	0	0	0	0	159	0	21	0	180
27-Oct	SWFB	0	0	135	20	1	0	0	0	0	0	0	0	0	0	0	0	0	0	0	0	156
27-Oct	PH1	0	12	0	0	0	14	0	0	0	0	0	0	0	0	0	0	0	0	0	0	26
27-Oct	PH2	0	0	0	0	0	0	0	0	0	0	0	0	0	0	0	0	0	0	0	0	0
27-Oct	PH3	0	0	0	0	0	0	0	0	0	0	0	0	0	0	0	0	0	0	0	0	0
27-Oct	SW1	0	0	0	0	0	0	0	0	0	0	0	0	0	0	0	0	0	0	0	0	0
27-Oct	SW2	0	0	0	0	0	0	0	0	0	0	0	0	0	0	0	0	0	0	0	0	0
27-Oct	SW3	0	0	0	0	0	0	0	0	0	0	0	0	0	0	0	0	0	0	0	0	0
<b>Avg/Survey</b>		<b>6</b>	<b>78</b>	<b>8</b>	<b>0</b>	<b>0</b>	<b>0</b>	<b>0</b>	<b>0</b>	<b>0</b>	<b>0</b>	<b>0</b>	<b>0</b>	<b>0</b>	<b>0</b>	<b>0</b>	<b>80</b>	<b>11</b>			<b>362</b>	
28-Oct	PHFB	0	0	0	0	0	0	0	17	0	0	0	0	0	0	0	0	0	0	147	111	275
28-Oct	SWFB	0	0	212	192	0	0	0	0	0	0	0	0	0	0	0	0	0	0	0	0	404
28-Oct	PH1	0	0	0	0	11	11	0	0	0	0	0	0	0	0	0	0	0	0	0	0	22
28-Oct	PH2	0	0	0	0	0	0	0	0	0	0	0	0	0	0	0	0	0	0	0	0	0
28-Oct	PH3	0	0	0	0	0	0	0	0	0	0	0	0	0	0	0	0	0	0	0	0	0
28-Oct	SW1	0	0	0	0	3	7	0	0	0	0	0	0	0	0	0	0	0	0	0	0	10
28-Oct	SW2	0	0	0	0	2	0	0	2	0	0	0	0	0	0	0	0	0	0	0	0	4
28-Oct	SW3	0	0	0	0	0	0	0	0	0	0	0	0	0	0	0	0	0	0	0	0	0
<b>Avg/Survey</b>		<b>0</b>	<b>202</b>	<b>17</b>	<b>10</b>	<b>0</b>	<b>0</b>	<b>0</b>	<b>0</b>	<b>0</b>	<b>0</b>	<b>0</b>	<b>0</b>	<b>0</b>	<b>0</b>	<b>0</b>	<b>0</b>	<b>129</b>			<b>715</b>	

**JDA Bird Counts: 10/25/15 to 10/31/15**

F(1): Forage AM survey F(2): Forage PM Survey NF(1): Non-Forage AM Survey NF(2): Non-Forage PM Survey

Date	Zone	Gulls				Cormorant				Caspian tern				White Pelican				Grebe				Total
		F(1)	F(2)	NF(1)	NF(2)	F(1)	F(2)	NF(1)	NF(2)	F(1)	F(2)	NF(1)	NF(2)	F(1)	F(2)	NF(1)	NF(2)	F(1)	F(2)	NF(1)	NF(2)	
29-Oct	PHFB	0	0	0	0	0	0	17	18	0	0	0	0	0	0	0	0	0	0	39	37	111
29-Oct	SWFB	0	0	311	317	0	0	0	0	0	0	0	0	0	0	0	0	0	0	0	0	628
29-Oct	PH1	0	0	0	0	6	7	0	0	0	0	0	0	0	0	0	0	0	0	0	0	13
29-Oct	PH2	33	11	0	0	0	0	0	0	0	0	0	0	0	0	0	0	0	0	0	0	44
29-Oct	PH3	11	0	0	0	0	0	0	0	0	0	0	0	0	0	0	0	0	0	0	0	11
29-Oct	SW1	0	0	0	0	1	1	0	0	0	0	0	0	0	0	0	0	0	0	0	0	2
29-Oct	SW2	0	0	0	0	0	0	0	3	0	0	0	0	0	0	0	0	0	0	0	0	3
29-Oct	SW3	3	0	0	0	0	0	0	0	0	0	0	0	0	0	0	0	0	0	0	0	3
<b>Avg/Survey</b>		<b>29</b>	<b>314</b>	<b>8</b>	<b>19</b>	<b>0</b>	<b>0</b>	<b>0</b>	<b>0</b>	<b>0</b>	<b>0</b>	<b>0</b>	<b>0</b>	<b>0</b>	<b>0</b>	<b>38</b>					<b>815</b>	
30-Oct	PHFB	0	0	63	57	0	0	10	17	0	0	0	0	0	0	0	0	118	0	0	113	378
30-Oct	SWFB	0	0	177	257	0	0	0	0	0	0	0	0	0	0	0	0	0	0	0	0	434
30-Oct	PH1	0	0	0	0	3	9	0	0	0	0	0	0	0	0	0	0	0	0	0	0	12
30-Oct	PH2	31	13	0	0	0	0	0	0	0	0	0	0	0	0	0	0	0	0	0	0	44
30-Oct	PH3	9	21	0	0	0	0	0	0	0	0	0	0	0	0	0	0	0	0	0	0	30
30-Oct	SW1	0	0	0	0	2	1	0	0	0	0	0	0	0	0	0	0	0	0	0	0	3
30-Oct	SW2	0	0	0	0	0	0	1	3	0	0	0	0	0	0	0	0	0	0	0	0	4
30-Oct	SW3	0	0	0	2	0	0	0	0	0	0	0	0	0	0	0	0	0	0	0	0	2
<b>Avg/Survey</b>		<b>37</b>	<b>278</b>	<b>8</b>	<b>16</b>	<b>0</b>	<b>0</b>	<b>0</b>	<b>0</b>	<b>0</b>	<b>0</b>	<b>0</b>	<b>0</b>	<b>0</b>	<b>59</b>	<b>57</b>					<b>907</b>	
31-Oct	PHFB	0	0	0	0	0	0	0	0	0	0	0	0	0	0	0	0	0	0	104	112	216
31-Oct	SWFB	0	0	341	347	0	0	0	0	0	0	0	0	0	0	0	0	0	0	0	0	688
31-Oct	PH1	17	0	0	0	0	1	0	0	0	0	0	0	0	0	0	0	0	0	0	0	18
31-Oct	PH2	9	0	0	0	0	0	0	0	0	0	0	0	0	0	0	0	0	0	0	0	9
31-Oct	PH3	0	0	0	0	0	0	0	0	0	0	0	0	0	0	0	0	0	0	0	0	0
31-Oct	SW1	0	0	0	0	11	3	0	0	0	0	0	0	0	0	0	0	0	0	0	0	14
31-Oct	SW2	0	0	0	0	0	0	3	7	0	0	0	0	0	0	0	0	0	0	0	0	10
31-Oct	SW3	0	0	0	0	0	0	0	0	0	0	0	0	0	0	0	0	0	0	0	0	0
<b>Avg/Survey</b>		<b>13</b>	<b>344</b>	<b>8</b>	<b>5</b>	<b>0</b>	<b>0</b>	<b>0</b>	<b>0</b>	<b>0</b>	<b>0</b>	<b>0</b>	<b>0</b>	<b>0</b>	<b>0</b>	<b>108</b>					<b>955</b>	
Totals	Gulls				Cormorant				Caspian tern				White Pelican				Grebe				Total	
	F	NF	F	NF	F	NF	F	NF	F	NF	F	NF	F	NF	F	NF						
<b>Weekly Total</b>	<b>265</b>	<b>3909</b>	<b>115</b>	<b>98</b>	<b>0</b>	<b>0</b>	<b>0</b>	<b>0</b>	<b>0</b>	<b>0</b>	<b>0</b>	<b>0</b>	<b>288</b>	<b>1008</b>	<b>5683</b>							
<b>Avg/Survey</b>	<b>19</b>	<b>279</b>	<b>8</b>	<b>7</b>	<b>0</b>	<b>0</b>	<b>0</b>	<b>0</b>	<b>0</b>	<b>0</b>	<b>0</b>	<b>0</b>	<b>21</b>	<b>72</b>	<b>406</b>							

John Day Dam  
Avian Zones



## John Day Weekly Averages

	Temp:	Secchi:	Fallbacks
Sun	62	6.0	
Mon	62	6.0	
Tue	62	6.0	
Wed	61	6.0	
Thur	61	6.0	
Fri	60	6.0	
Sat	60	6.0	
<b>AVG:</b>	<b>61</b>	<b>6.0</b>	<b>AVG</b>
			<b>MAX</b> <b>0</b>
			<b>MIN</b> <b>0</b>

	NE1	NE2	S.Ent	SE1	N.Ent	JBS Diff	Bay19
Sun	8.1	8.1	1.5	8.3	1.5	4.5	1.2
Sun	8.2	8.4	1.5	8.5	1.5	4.6	1.2
Mon	8.1	8.1	1.4	8.4	1.6	4.8	1.2
Mon	8.2	8.1	1.4	8.3	1.5	4.6	1.3
Tues	8.1	8.1	1.4	8.3	1.6	4.5	1.1
Tues	8.2	8.3	1.5	8.6	1.5	4.6	1.2
Wed	8.2	8.2	1.5	8.4	1.6	4.6	1.5
Wed	8.2	8.2	1.5	8.6	1.6	4.6	1.5
Thur	8.2	8.2	1.5	8.8	1.5	4.6	1.4
Thur	8.2	8.2	1.5	8.3	1.6	4.5	1.5
Fri	8.5	8.5	1.5	8.5	1.5	4.5	1.4
Fri	8.7	8.7	1.4	8.7	1.5	4.5	1.4
Sat	8.8	8.8	1.4	8.7	1.5	4.6	1.4
Sat	8.9	8.9	1.4	8.8	1.5	4.5	1.3
<b>AVG:</b>	<b>8.3</b>	<b>8.3</b>	<b>1.5</b>	<b>8.5</b>	<b>1.5</b>	<b>4.6</b>	<b>1.3</b>